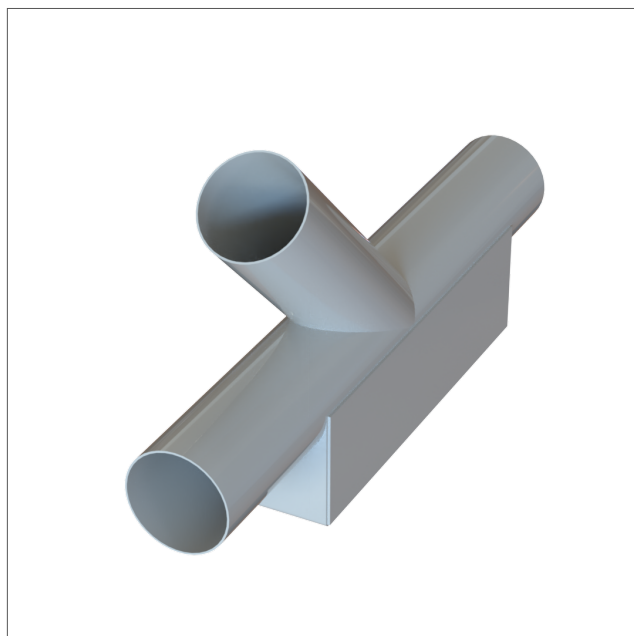




STBP-R- Branch pipe galvanized with

Duct system galvanized



STBP-R- steel branch pipe with reinforced box, with straight edges and extended ends. Designed to extend the use of the branch pipe with abrasive material. Painted in RAL9006ALU

As option:
- Electro-galvanized

STBP-R-45° Branch pipe galvanized with reinforced box

Art.no	A (mm)	B (mm)	Weight (kg)
STBP-R-076-050	76	50	2.45
STBP-R-076-063	76	63	2.45
STBP-R-076-076	76	76	2.50
STBP-R-102-050	102	50	4.01
STBP-R-102-063	102	63	4.06
STBP-R-102-076	102	76	4.06
STBP-R-102-102	102	102	4.36
STBP-R-108-050	108	50	4.13
STBP-R-108-063	108	63	4.23
STBP-R-108-076	108	76	4.23
STBP-R-108-102	108	102	4.63
STBP-R-108-108	108	108	4.63
STBP-R-127-050	127	50	4.66
STBP-R-127-063	127	63	4.76
STBP-R-127-076	127	76	4.86
STBP-R-127-102	127	102	5.26
STBP-R-127-108	127	108	5.21
STBP-R-127-127	127	127	5.36