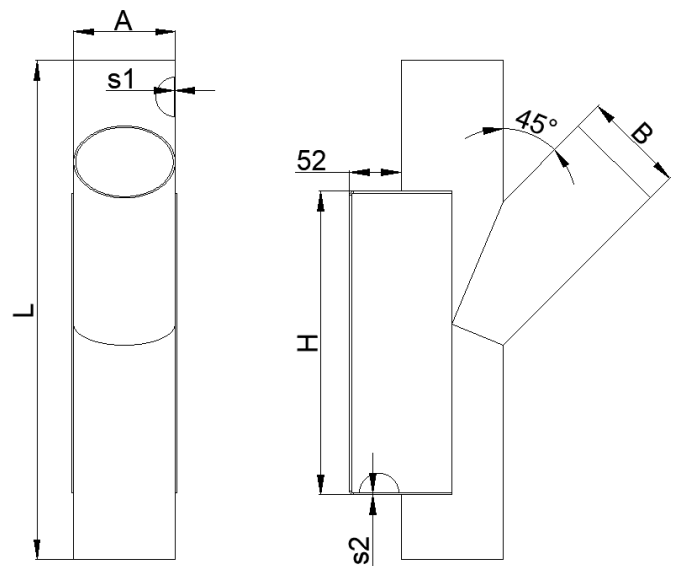
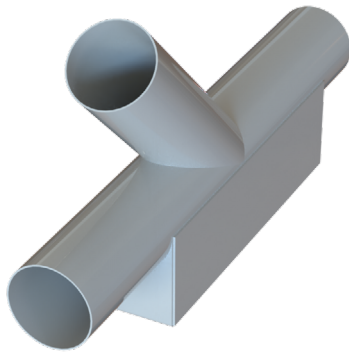




## STBP-45-R - branch 45° with reinforced box

Black steel

Fully welded branches at 45° completely airtight. Reinforced with box for longer service time. Mainly to be used when abrasive materials transported. Branches are attached to the pipe by means of pipe connectors. With straight edges for a good connection with pipe connectors. Painted in RAL9006ALU. As option can be electrogalvanized.



Diameter	Diameter	Thickness	Thickness	Dimension	Length	Weigh
ØA, mm	ØB, mm	s1, mm	s2, mm	H, mm	L, mm	kg
076	050	1,5	2	304	500	2,45
076	063	1,5	2	304	500	2,45
076	076	1,5	2	304	500	2,50
102	050	2	2	304	500	4,01
102	063	2	2	304	500	4,06
102	076	2	2	304	500	4,06
102	102	2	2	304	500	4,36
108	050	2	2	304	500	4,13
108	063	2	2	304	500	4,23
108	076	2	2	304	500	4,23
108	102	2	2	304	500	4,63
108	108	2	2	304	500	4,63
127	050	2	2	304	500	4,66
127	063	2	2	304	500	4,76
127	076	2	2	304	500	4,86
127	102	2	2	304	500	5,26
127	108	2	2	304	500	5,21
127	127	2	2	304	500	5,36